



TRETIGHT™ INFLATABLE DOCK SEALS

DURABLE, VERSATILE & ENERGY-SAVING

Ansell



TRETIGHT™ is an inflatable loading dock seal with great sealing ability, which helps minimising heat loss and improving energy conservation. The flexible rubber coated fabric in combination with low pressure, preserves internal temperatures and protects products from outside contaminants. TRETIGHT™ creates the draught-free climate you need between any vehicle and the loading dock in a matter of seconds – regardless of the prevailing temperature.

“With TRETIGHT™
you will get a
dock seal with the
highest sealing
ability possible”

TRETIGHT™ – FEATURES & BENEFITS

- Fits a majority of loading bays and vehicles
- Saves energy
- Improves work environment
- Extremely durable
- Weatherproof
- Quickly inflated
- Easy to install and maintain
- Can be adapted to meet specifications

APPLICATIONS

- Cold storage facilities
- Food & Beverage industry
- Logistic & Distribution centres
- Warehouses

Would you pay for an industrial facility just to let the money disappear through a giant hole in the wall? This is what happens if the building is not equipped with a proper dock sealing solution. The loss of refrigerated or cooled air leads to unnecessarily high energy bills. Insufficient protection against dirt, dust and insects causes inferior goods quality. With TRETIGHT™ you will get a dock seal with the highest sealing ability possible.



THE TRETIGHT™ MATERIAL

“The material is strong, very durable and offers an outstanding resistance against wear and tear”

MATERIAL PROPERTIES

- Fabric: Polyamide
- Coating: Chloroprene rubber
- Weight: $410 \pm 25 \text{ g/m}^2$
- Colour: Black
- Tensile strength (ISO 1421): $> 1600 \text{ N/50 mm}$
- Tear strength (ISO 4674): $> 200 \text{ N}$
- Abrasion resistance (ISO 5470-1): > 1000 rotations to rubber breakthrough
- Material is resistant to low temperatures (SS-ISO 812)

TRETIGHT™ is made of a unique chloroprene rubber coated polyamide fabric. The material is strong, very durable and offers an outstanding resistance against wear and tear. The material enables an excellent fit around the roof and sides of the vehicle, and remains elastic and supple even in cold weather conditions.



TRETIGHT™ CONSTRUCTION

“Cushions from different TRETIGHT™ models can be combined in order to meet special requirements”

The seal consists of four main parts – **the top cushion, two side cushions and the fitting items**. Cushions from different TRETIGHT™ models can be combined in order to meet special requirements.

The fitting items are made of steel and aluminium, and are easily assembled. All parts are delivered as a complete ready-to-install set with a comprehensive installation guide.

The fan, which is also part of the fitting items, is specially designed for optimal function in a TRETIGHT™ seal. The air from the fan inflates the cushions, starting with the side cushions, followed by the top cushion. The fan is powered by three phases, ensuring that the seals push hard against the perimeter of the truck.

TRETIGHT™ is easy to integrate into the whole docking system. When installed, it operates automatically – no levers to pull, no buttons to push. The lack of steel construction around the side cushions prevents the seal from getting damaged by the docking truck.

SAVES ENERGY



Through its unique design, TRETIGHT™ offers a highly effective seal to vehicles of different heights, widths and shapes. The low pressure in combination with the flexible fabric ensures a good seal between vehicle and building, which contributes to reduced heat loss as well as low operational cost.

The fan operates with outside air, so no heated or cooled air is needed to inflate the seal. In addition, the insulating properties of the air-filled cushions contribute to energy conservation.

“Through its unique design, TRETIGHT™ offers a highly effective seal to vehicles of different heights, widths and shapes”

IMPROVES WORKING CONDITIONS



Good working conditions are a prerequisite for occupational safety, job satisfaction, productivity and quality of products and services. With TRETIGHT™, they can very easily be improved in a company. After the vehicle has docked, it takes 15 to 30 seconds to inflate the seal and to obtain a draught-free environment in the building.

The electric fan runs just as long as the seal is in use and the low pressure provides an optimal sealing effect. The air is taken from the outside, which keeps the noise level inside the building low.

“After the vehicle has docked, it takes 15 to 30 seconds to inflate the seal and to obtain a draught-free environment in the building”

HANDLES TRUCKS OF DIFFERENT SIZES



The inflatable design with the long movement of the cushions and the construction itself enable the seal to handle trucks of different dimensions.

Since it is possible to combine cushions from different types of seals, TRETIGHT™ can be used in a large number of different applications.

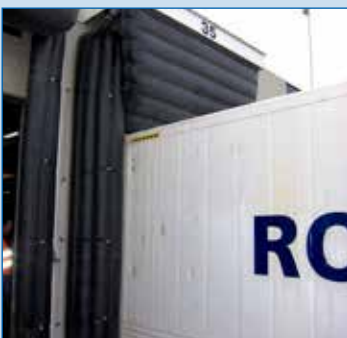
LONG-LASTING



As the seal has no contact with the moving truck, the wear and tear of the TRETIGHT™ is minimised. Its unique design with the curved side cushions in combination with the corner cushions allows for even better sealing in strong wind, and the lack of side panels provides a cost-saving and durable construction.

The high air volume created by the fan makes the seal work also with small leaks in the cushions. The chloroprene rubber coated fabric is the perfect choice for a flexible and long-lasting seal.

EASY TO INSTALL & MAINTAIN



The TRETIGHT™ consists of few components, and is thereby easy to install. Maintenance of the seal is also convenient, since the material properties allow for easy repair in case a cushion is damaged.

If needed, the different cushions are also easily replaced, as they are separate items.



TRETIGHT™ DIMENSIONS

TOP	NUMBER OF DUCTS	WIDTH OF CUSHION	WIDTH OF CONSTRUCTION	EXTENSION LENGTH*
800	4	3200	3250	800
1100 S	5	3200	3250	1100
1100 L	5	3500	3550	1100
1700 S	7	3200	3250	1700
1700 S	7	3500	3550	1700

*Extension length: Distance between underside of front plate and lowest position of inflated top cushion.
(All measurements in mm)

SIDE	NUMBER OF DUCTS	LENGTH OF CUSHION	EXTENSION LENGTH*
S	4	3500	700
L	5	3650	1000

*Extension length: Distance between C-profile and inner side of inflated cushion.
(All measurements in mm)

Ansell Protective Solutions AB
Johan Kocksgatan 10, SE-231 81 Trelleborg, Sweden
Tel: +46 (0)10 205 1800, Fax: +46 (0)10 205 1840
<http://protective.ansell.com> | order.protective@ansell.com

® and ™ are trademarks owned by Ansell Limited or one of its affiliates.
©2016 Ansell Limited. All Rights Reserved.

